



Wild West

歐 式 小 清 新

在海外悠閒的日子生活，跟香港急促的生活節奏截然不同，由海外回流返港的戶主二人希望新居能延續舊日在海外時悠然的氣氛，故設計師以簡約歐式為主調，為戶主打造倆小口子的避風港。Embracing a clean and simple design scheme enriched by a series of welcoming Western accents, this small apartment has been made to feel warm and spacious by designer Jacky Lee.

Text by *Kate Li & Melinda Earsdon*
Interior design & photo courtesy of
Jacky Lee / inT Design Furniture Limited



瀏覽設計師更多作品
www.todaysliving.com





看

似微不足道的燈光或許只佔一角，卻照亮我們每天回家後的時光。其實燈光對整體設計的影響比大家想像的更重要。設計師運用西方室內燈光設計原理，讓新居更貼近戶主的要求，全屋採用照明向上 (uplight) 的光源，感覺更柔和之餘，散發的光暈均能營造向上延伸的視覺效果。例如，飯廳一盞吊燈散發的花形燈光效果，增添客廳的浪漫情懷。

平衡的要訣

全屋木製傢具的細膩紋理低調訴說戶主品味，木製傢具同時讓一室氛圍仿如回到海外生活般悠閒。淺色複合木地板配襯飯廳的白，配上蜜糖木色櫃，全屋更

顯得溫馨。原來的廳區電視牆並不如理想，因此設計師以經典歐式風情的花線設計修飾比例。設計師選用現代風格的傢具，平衡整體觀感保持現代感。另外，設計師特意拉長電視櫃，多出的位置可以讓熱愛繪畫的戶主二人展示作品，用自己的畫妝點廳區。

連貫設計

空間感是西方室內設計中營造宜人生活環境的一大重點。因此，設計師將原來三房一儲物房的間隔規劃成兩房單位，順勢令主人房空間更為寬敞。設計師打通兩間房間，將衣帽間和寢區合二為一。設計師用燈光效果修飾原有的橫樑，讓分區更模糊且自然。房內燈光同

樣別有用心思，例如一對床頭燈可以變換角度，讓房間的燈光有更多的可能性。床頭櫃是天然木傢具，另以一面嵌牆式儲物櫃以白色焗漆處理，為戶主提供更多的儲物空間，同時與真皮咕啞軟墊床頭板形成深淺對比。戶主二人十分喜愛作畫，因此設計師特意設計專用作收藏圖畫的收納櫃。書房置物櫃與飯廳的置物櫃同樣採用不規則的設計概念，讓一屋設計更見連貫。窗台位置上收納櫃盡用每吋空間，同時讓戶主收納更得心應手。

1. 原來的廳區電視櫃使用並不如理想，因此設計師以花線設計修飾比例，設計滲透經典歐式風情。|| A simple two-seater sofa creates the perfect place where the owners can kick back and enjoy the panoramic views stretching out over the neighbouring hillside.

2. 飯廳一盞花形吊燈，散發的燈光效果，增添客廳的浪漫情懷。|| Housing a small rectangular table is flanked by four chairs, the far end of the room features a beige and white colour palette that is bright and airy.

3. 書房的儲物同樣是為戶主度身而造，戶主二人十分喜愛作畫，因此設計師特意設計專用作收藏圖畫的收納櫃。|| Lee incorporated a wide range of wooden furniture, which adds a sense of warmth, echoing the stunning engineered flooring below.





Data
 Location: Park Metropolitan 觀月樺峰
 Size: 795 sq. ft.

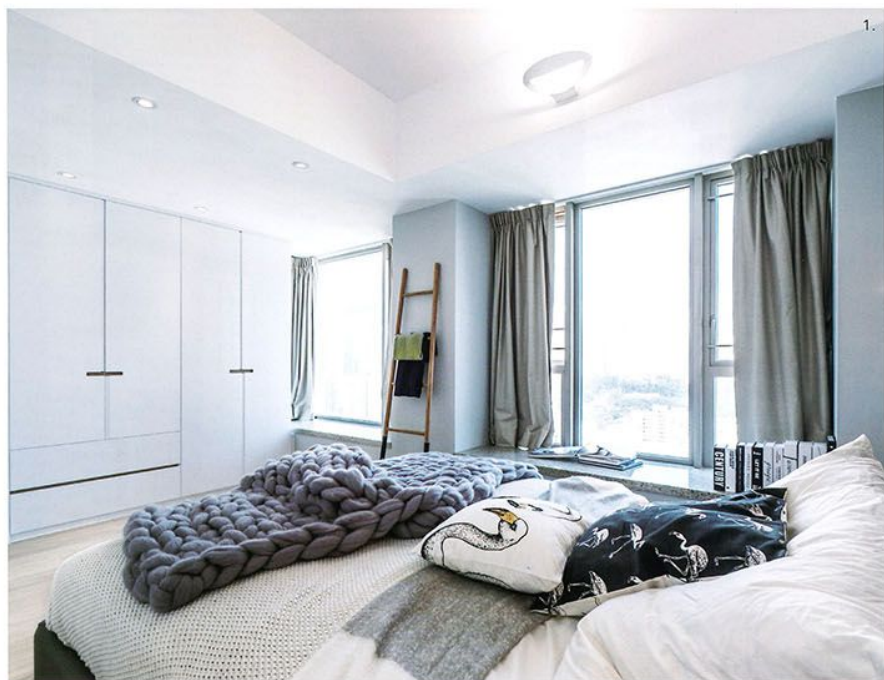
Supplier List
 Living and dining room: (sofa) Décor/
 (dining table and chair) BoConcept/ (paint)
 inT Design Furniture Limited/ (lighting)
 Artemide **Master bedroom:** (bed)
 BoConcept/ (cabinet, paint) inT Design
 Furniture Limited/ (lighting) Artemide

1. 主人房由兩間房間打通而成，設計師將衣帽間和寢區合二為一，設計師以燈光效果以修飾原有的橫線，讓分區模糊得來順自然。* In the master suite, designer Jacky Lee re-structured the floor plan so as to create one larger area rather than separate dressing and sleeping rooms.

2. 一面嵌牆式儲物櫃以白色烤漆處理，為戶主提供更多的儲物空間，同時與真皮咕啞軟墊床頭板形成對比。* Again, the owners favoured a pastel colour palette, which welcomes the morning sun in from outside the property, brightening up the space.



2.



1.

Because homes in Hong Kong are notoriously small, many owners choose to introduce a simple design scheme that avoids making the space feel cramped, and the owners of this 795 square feet apartment were no exception. They wanted their home to embrace a somewhat natural design scheme rich in Western accents, however they were also eager to enhance the sense of spaciousness, so they turned to Jacky Lee and the talented team from inT Design Furniture Limited to help them achieve their goals.

inside in order to make the most of the space, so Lee set about reducing this to two bedrooms so as to enlarge the main living and dining area. The entire feel cramped, and the owners of this 795 square feet apartment were no exception. They wanted their home to embrace a somewhat natural design scheme rich in Western accents, however they were also eager to enhance the sense of spaciousness, so they turned to Jacky Lee and the talented team from inT Design Furniture Limited to help them achieve their goals.

the master bedroom. One end of the room has been entirely given over to entertaining, featuring a beige and white colour palette that is bright and airy. Along the far wall, a built-in cabinet makes the perfect place to store flatware and proudly display a small collection of ornaments, creating a talking point over dinner. Immediately in front, a small rectangular table is flanked by four beige chairs, which are highlighted thanks to the addition of a playful chandelier up above. ↗