



Understated Elegance

要做到實用且耐看，除了從居室的格局入手，也可為居室配搭別樹一格的色調。設計師 Jacky 棄用現在室內設計中流行的木色，同時把調色盤調深一格，構成這型格又不失優雅的家。Featuring a dark colour scheme softened by the addition of neutral tones and rich materials, this petite property feels surprisingly spacious thanks to the talented team from inT Design Furniture Limited.

拒
絕
平
凡



瀏覽設計師更多作品
www.todayliving.com



Text by Nicole Chung & Melinda Earsdon
Interior design by Jacky Lee / inT Design Furniture Limited



1.



位的主人是兩夫婦及其三歲的小孩。戶主希望居室帶有時尚感覺之餘，亦不失優雅。設計師於燈光配搭大花心思，並且以漸變方式為客飯兩廳帶來截然不同的感覺，賦予空間強烈的對比。

對比藝術

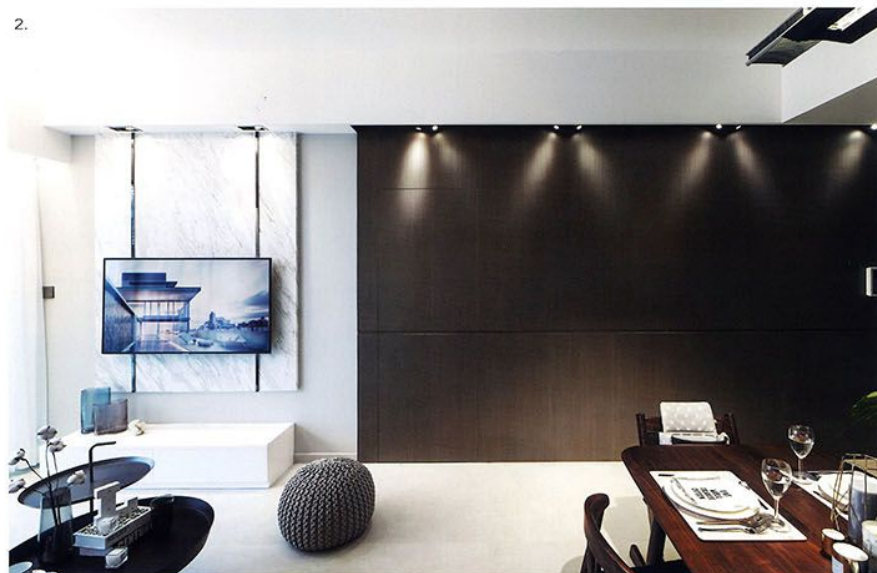
踏進這八百餘呎的單位，不難發現單位選用的色調是經設計師精心配襯的。飯廳主用胡桃木色，予人沉穩的氛圍。藏有暗門的一幅牆以胡桃木組成，設計師棄用一般燈槽向上照射的方式，反而將射燈向下照射。此舉不但能將光線映照在胡桃木牆上，締造猶如花卉盛放的效果，同時可將視覺比例拉高。同樣是深木色的餐桌椅旁有一組及頂儲物櫃，中央位置特意鏤空，並飾以灰鏡，有助提升飯廳的光亮感，緩和深木色帶來的暗沉。設計師以漸變的手法作空間轉折，於客廳選用素白色調，一幅白色雲石電視牆為空間帶來截然不同的感覺，電視牆更飾以灰鏡鋼，洋溢高貴的情調，同時與飯廳儲物櫃的設計互相呼應。

安全至上

戶主的孩子年紀尚小，因此安全性亦是居室的重點之一。戶主曾跟設計師商討設置開放式廚房的可能性，因戶主時常烹飪，希望有個開揚感十足的廚房，空間不致局促。但要考慮到安全性問題，設計師便建議將廚房打造成半開放式，並以玻璃作為間隔，戶主可享受烹飪的樂趣，同時可時刻留意孩子的活動。設計師Jacky表示，現時室內設計多用木紋磚，但因石紋磚較少有積聚灰塵的情況，設計師便在室內使用起用大石紋磚。灰色的石紋磚亦跟牆上灰色油漆的牆壁呼應，可見設計主題環環相扣。不說不知，主人房的設計其實是圍繞戶主希望保留的一張梳妝檯。設計師選用素淨的灰調及白色，更能突出梳妝檯這個主角。兒童房的狐狸圖案牆紙予人耳目一新的感覺，比起一般市面上常見的牆紙較為特別，亦不顯幼稚，可伴隨小孩成長。牆上及天花的氣球燈更是設計師精心選購，夜間怕黑時可只亮著牆燈，足見設計師的巧思。

1. 設計師以時尚型格為設計概念，連冷氣槽也特別換上黑色以貫徹主題。 Upon entering the flat, visitors are greeted with a vast expanse of dark wooden handle-free cupboards that discreetly provides additional storage and reaches half way into the lounge.
2. 兩廳以截然不同的感覺示人，分區清晰。飯廳特意設計的燈槽更賦予一室獨特的光暗層次。 The dining room and the living room present two entirely different styles. The discreetly-designed light rough gives extra layers of shades to the dining area.
3. 單位毗連露台，採光良好，因此設計師特意於客廳用上較淡的色調，再漸變至飯廳的深木色。 An elegant yet slightly kitschy six-seater wooden dining table sits parallel to the wall, flanked by a mix-match of chairs which add a little character.

2.



3.





1. 深木色的餐桌椅旁為一組及頂儲物櫃，中央的位置特意鏤空，並鋪上灰鏡，有助提升飯廳的光亮感。|| The lighting has been kept simple, showcasing a contemporary feature instead of a typical chandelier that can be found in many Hong Kong homes.

2. 考慮到安全性的問題，設計師將廚房設計成半開放式，並以玻璃作為間隔以確保安全。|| Given that the property is quite petite, the designer opened up the kitchen by introducing a glass wall that allowed the owners to keep an eye on their three-year-old when cooking.

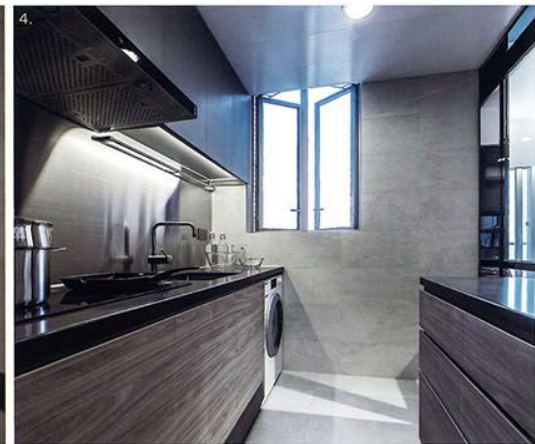
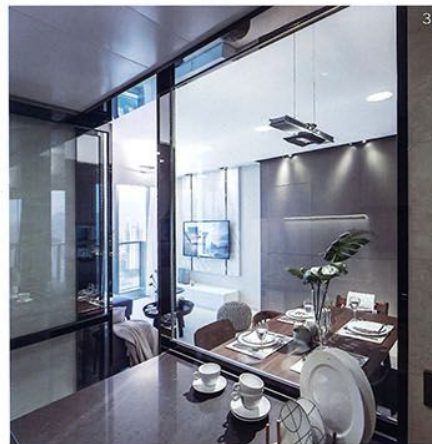
3. 玻璃間隔可緩和空間的局促感，同時可讓烹飪中的戶主時刻留意小孩的活動。|| The new glass wall also created an additional benefit, enhancing the sense of spaciousness and encouraging natural light to flood throughout the property.

4. 廚房同樣以型格為基調，灰色漸變至木色，與廳區感覺一致。|| Clean and contemporary, the kitchen itself features marble-patterned tiles underfoot, modern grey and wood-coloured cabinetry and grey quartz stone surfaces.

Rising from the cityscape like a gleaming phoenix reborn from the ashes, The Latitude in San Po Kong is a luxury development that plays home to almost 1,200 units, sprawled across five impressive towers, making this a perfect choice for Hong Kong residents who look to enjoy the spectacular views over Victoria Harbour. As such, the owners of this 889 square feet apartment were keen to introduce a design scheme that reflected the building's prestigious reputation while featuring a mix-and-match style that creates a host of difference atmospheres to complement their daily lives.

However, given that the property is quite petite, designer Jacky Lee and the talented team from inT Design Furniture Limited began their work by addressing some of the structural issues in the apartment. For instance, they opened up the enclosed kitchen by introducing a glass wall that allowed the owners to keep an eye on their three year old when cooking, and also enhanced the sense of spaciousness in the property. With this problem, the design team then shifted their attention to the stylish interiors.

Focusing on a simple and understated palette that wouldn't overwhelm the space, they used a wide range of colours to create definition and express the transition between each unique space. Upon entering the flat, visitors are greeted with a vast expanse of dark wooden handle-free cupboards that discreetly provides additional storage and reaches half way into the lounge. The same cupboards have been used to encase the opposite wall, this time also including a simple mirrored display case that lightens up the proceedings.





Data

Location: The Latitude, San Po Kong 新蒲崗譽港灣
Size: 889 sq.ft.

Supplier List

Living & dining room, master bedroom, children's bedroom and kitchen: (wallpaper, lighting, bed & cabinet) custom made by inT Design Furniture Limited

1. 兒童房鋪設狐狸圖案牆紙，予人耳目一新的感覺，亦不顯幼稚，可伴隨小孩成長。|| Perfect for all children, the designer went for a more playful approach in the toddler's bedroom, adding a colourful teepee where the kids can play.
2. 浴室沿用原有的設計，以自然的色調為主。|| The master bathroom is simple and understated, featuring opulent marble and clean white porcelain fixtures.
3. 主人房鋪設灰色布紋牆紙，一旁的白色櫃組中央鏤空，讓戶主放置書本等，同時可充當床頭櫃之用。|| Meanwhile, the master bedroom combines shades of white and dark grey to create a sense of tranquility, which is calm yet grand.
4. 設計師特意選用來自同一系列的 Tom Dixon 吊燈及燈燈，為一室平白增添型格感。|| Blessed with floor-to-ceiling windows, the space allows the spectacular views of the city to invade the room. 🔥

